



LMC23

Break-Out Group

TORONTO
REGION

1

Engaging Local Populations



which are underrepresented in the labour market

There are

4,250,900

working age adults in Ontario 15-64, not working, looking for work or going to school full-time.

What are they doing?

- *Out of the labour market by choice*
- *Taking care of children, those with special needs or elders*
- *Have significant disabilities limiting their employment options*
- *Commute or other financial challenges*
- *Live in rural or remote communities*
- *Possess skills and abilities that are mismatched to the labour market*

2

Engaging Local Populations



which are underrepresented in the labour market

In the Toronto Region there are

2,013,100

working age adults 15-64, not working, not looking for work or not going to school full-time.

This represents...

47.4%

of the underutilized workforce in Ontario

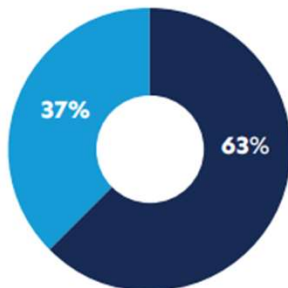
3

Engaging Local Populations

which are underrepresented in the labour market

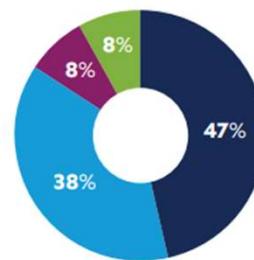
JOB OPENINGS, ONTARIO, 2022-2032

Total job openings: 2,898,450



SOURCES OF NEW LABOUR SUPPLY, ONTARIO, 2022-2032

Supply Additions: 2,898,450



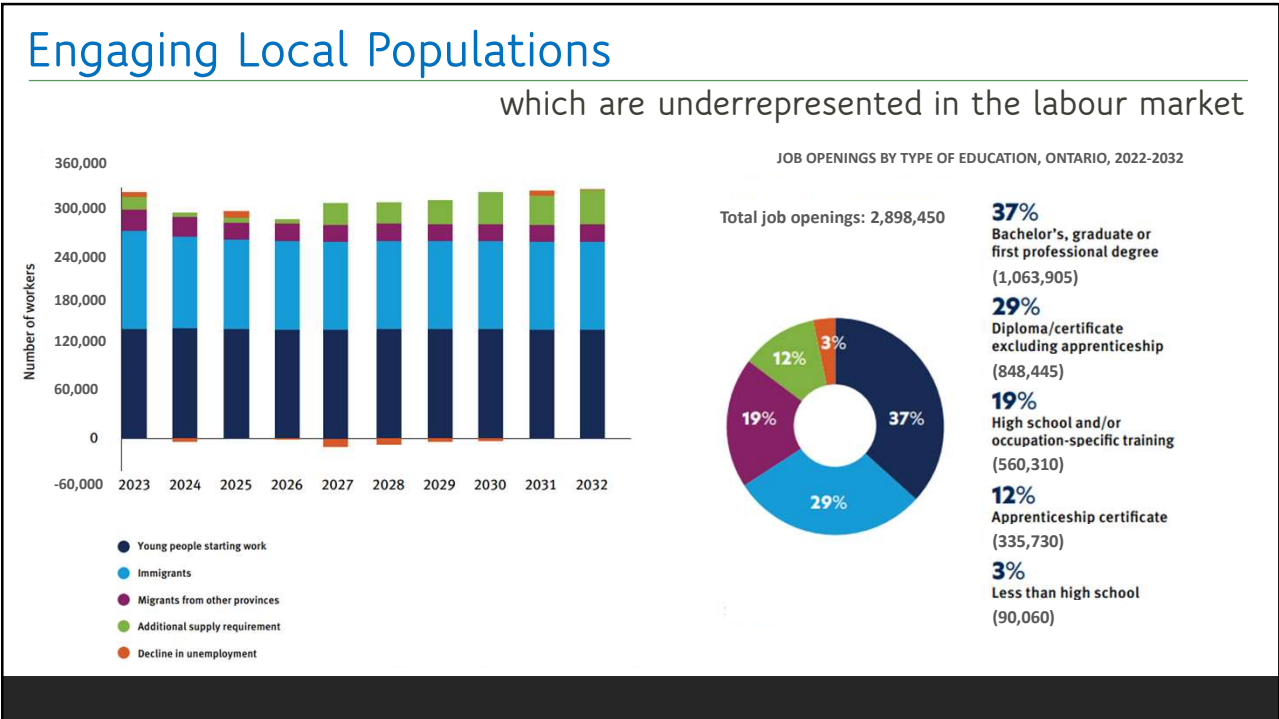
47%
Young people starting work (1,340,925)

38%
Immigrants (1,102,950)

8%
Migrants from other provinces (222,300)

8%
Additional supply requirement (232,275)

4



5



6

Engaging Local Populations

which are underrepresented in the labour market



Canada has doubled-down on immigration

- In 2022, Canada welcomed a record 437,000 permanent residents
- Immigration accounts for almost 100% of Canada's labour force growth and nearly 80% of our population growth
- 2023-2025 Canada Immigration Goals:
 - **2023:** 447,055 Permanent Residents
 - **2024:** 451,000 Permanent Residents
 - **2025:** 500,000 Permanent Residents
- By 2025, admissions will be 1.14% of Canada's Pop.

7

Engaging Local Populations

which are underrepresented in the labour market



**CENSUS
2021**

Ontario

Immigration Levels: 2016-2021

Regular Immigrants: **584,680**

Non-Permanent: **387,850**

23.8% Increase in Permanent Residents

92.8% Increase in Non-Permanent

8

Engaging Local Populations

which are underrepresented in the labour market



**CENSUS
2021**

Ontario Top Immigrant Populations

| | | |
|-------------|---------|---------|
| India | 139,660 | +101.5% |
| China | 54,645 | -7.1% |
| Philippines | 45,235 | -15.0% |

9

Engaging Local Populations

which are underrepresented in the labour market



**CENSUS
2021**

Toronto Region Immigration Levels: 2016-2021

Regular Immigrants: **400,765**

Non-Permanent: **253,000**

11.3% Increase in Permanent Residents

82.5% Increase in Non-Permanent

10

Engaging Local Populations

which are underrepresented in the labour market



**CENSUS
2021**

Toronto Region Top Immigrant Populations

| | | |
|-------------|---------|--------|
| India | 107,980 | +82.2% |
| China | 45,340 | -9.6% |
| Philippines | 34,770 | -20.7% |

11



12

Engaging Local Populations

which are underrepresented in the labour market



**CENSUS
2021**

Ontario

Youth Population: 2016-2021

Youth 15-19: **801,455** (-1.3%)

Youth 20-24: **895,600** (+0.1%)

Youth 25-29: **975,400** (+11.6%)

Youth and Youth-at-Risk
52.3% Participation Rate

13

Engaging Local Populations

which are underrepresented in the labour market



**CENSUS
2021**

Toronto Region

Youth Population: 2016-2021

Youth 15-19: **377,130** (-2.4%)

Youth 20-24: **437,985** (+1.3%)

Youth 25-29: **486,545** (+10.1%)

Youth and Youth-at-Risk
52.3% Participation Rate

14



15

Engaging Local Populations

which are underrepresented in the labour market



**CENSUS
2021**

Ontario

Indigenous Population: 2016-2021

First Nations: **251,030** (+6.1%)

Metis: **134,615** (+11.6%)

Inuit: **4,310** (+29.8%)

First Nations Participation Rate: 56.2%

Metis Participation Rate: 63.8%

Inuit Participation Rate: 56.2%

16

Engaging Local Populations

which are underrepresented in the labour market



**CENSUS
2021**

Toronto Region Indigenous Population: 2016-2021

First Nations: **30,495** (-5.2%)

Metis: **18,745** (-7.3%)

Inuit: **765** (-7.3%)

First Nations Participation Rate: **56.2%**

Metis Participation Rate: **63.8%**

Inuit Participation Rate: **56.2%**

17



Persons with Disabilities

18

Engaging Local Populations

which are underrepresented in the labour market



**CENSUS
2021**

Ontario

Disabilities Population: 2016-2021

Workforce: **1,771,340**

Job Seekers: **110,500**

Not in the Labour Force: **948,630**

Labour Force Participation Rate: **53.6%**

19

Engaging Local Populations

which are underrepresented in the labour market



**CENSUS
2021**

Toronto Region

Disabilities Population: 2016-2021

Workforce: **838,850**

Job Seekers: **55,030**

Not in the Labour Force: **421,770**

Labour Force Participation Rate: **53.6%**

20



21

Engaging Local Populations

which are underrepresented in the labour market



**CENSUS
2021**

Ontario

Women: 2016-2021

Workforce: **3,750,130**

Job Seekers: **263,780**

Not in the Labour Force: **2,264,740**

Labour Force Participation Rate: 78.7%

22

Engaging Local Populations

which are underrepresented in the labour market



**CENSUS
2021**

**Toronto Region
Women: 2016-2021**

Workforce: **1,775,945**

Job Seekers: **131,375**

Not in the Labour Force: **1,006,920**

Labour Force Participation Rate: 78.7%

23



24

Engaging Local Populations

which are underrepresented in the labour market



**CENSUS
2021**

Ontario

Mature Workers: 2016-2021

Ages 55-59: **1,040,160** (+5.1%)

Ages 60-64: **966,575** (+14.2%)

Ages 65+: **2,637,710** (+17.1%)

Participation, 55-59: **77.0%**

Participation, 60-64: **57.5%**

Participation, 65-69: **31.5%**

25

Engaging Local Populations

which are underrepresented in the labour market



**CENSUS
2021**

Toronto Region

Mature Workers: 2016-2021

Ages 55-59: **462,785** (+7.6%)

Ages 60-64: **402,560** (+14.7%)

Ages 65+: **1,056,180** (+16.7%)

Participation, 55-59: **77.0%**

Participation, 60-64: **57.5%**

Participation, 65-69: **31.5%**

26

Engaging Local Populations



which are underrepresented in the labour market

Rethinking Career Development Services

1. Concentrate on the existing population of job seekers
2. Maximize the population of underrepresented groups receiving service
3. Work with organizations and services providing non-employment related supports
4. Incorporate subject matter training for local employers on underrepresented groups

27

Engaging Local Populations



which are underrepresented in the labour market

Concentrate on the strengths unique to the Toronto Region

- Magnet for immigrant populations
- Younger population
- Multiple educational options
- Strong Transportation Infrastructure
- Diversified economy

28

Engaging Local Populations

which are underrepresented in the labour market



If you have any questions,
please include them in the
questions tab in
GotoWebinar or email:
OntarioLMR@outlook.com